



Aviation Ground Support Equipment

Power and Air Conditioning Cart (PACC)

2 Examples

Power and Air Carts – Thermal and Power





Power and Air Carts – Thermal and Power

PACC-20-36-4

Supply Air:

Capacity: 144,000 BTU/HR

Air Flow: 1050 CFM

Export Power:

110VAC

28VDC

24VDC



Power and Air Carts – Thermal and Power

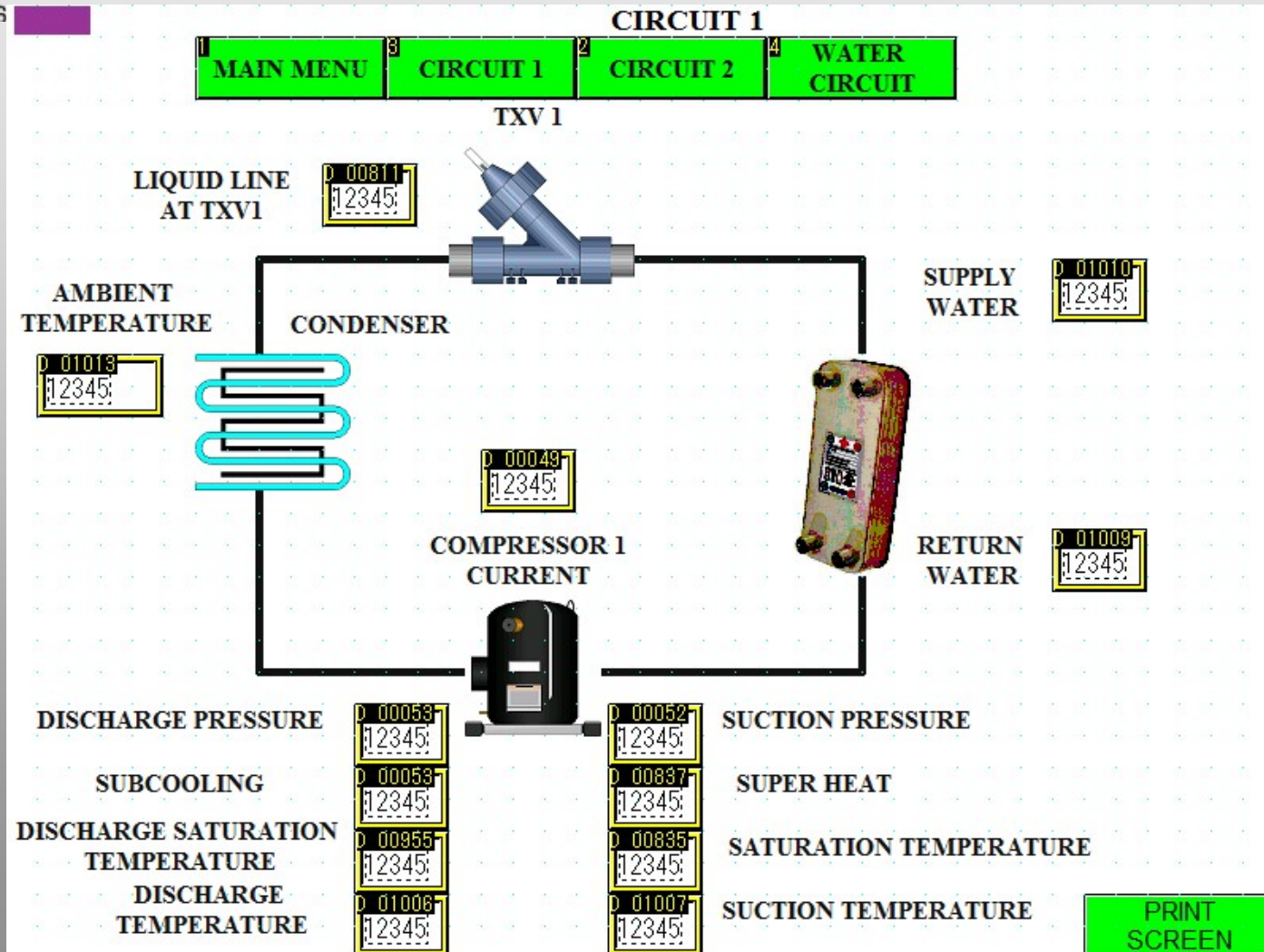
MAIN MENU

1 MAIN MENU	3 CIRCUIT 1	2 CIRCUIT 2	4 WATER CIRCUIT
-------------	-------------	-------------	-----------------

AMBIENT AIR AT BLOWER INTAKE	D 01013 [2345] [°F]	COMPRESSOR 1 HEAD PRESSURE	D 00053 [2345] [PSIG]
SUPPLY AIR OFF COIL	D 01012 [2345] [°F]	COMPRESSOR 1 SUCTION PRESSURE	D 00052 [2345] [PSIG]
WATER TANK	D 01011 [2345] [°F]	COMPRESSOR 2 HEAD PRESSURE	D 00051 [2345] [PSIG]
SUPPLY WATER	D 01010 [2345] [°F]	COMPRESSOR 2 SUCTION PRESSURE	D 00050 [2345] [PSIG]
RETURN WATER	D 01009 [2345] [°F]	COMPRESSOR 1 CURRENT	D 00049 [2345] [AMPS]
BLOWER OUTLET	D 01008 [2345] [°F]	COMPRESSOR 2 CURRENT	D 00048 [2345] [AMPS]
COMPRESSOR 1 SUCTION LINE	D 01007 [2345] [°F]	PUMP CURRENT	D 00047 [2345] [AMPS]
COMPRESSOR 1 DISCHARGE LINE	D 01006 [2345] [°F]	BLOWER CURRENT	D 00046 [2345] [AMPS]
COMPRESSOR 2 SUCTION LINE	D 00813 [2345] [°F]	AC VOLTAGE	D 00913 [2345] [VAC]
COMPRESSOR 2 DISCHARGE LINE	D 00812 [2345] [°F]	DC VOLTAGE	D 00912 [2345] [VDC]
COMPRESSOR 1 LIQUID LINE TXV	D 00811 [2345] [°F]	AIR FLOW STATION	D 00911 [2345] [CFM]
COMPRESSOR 2 LIQUID LINE TXV	D 00810 [2345] [°F]		

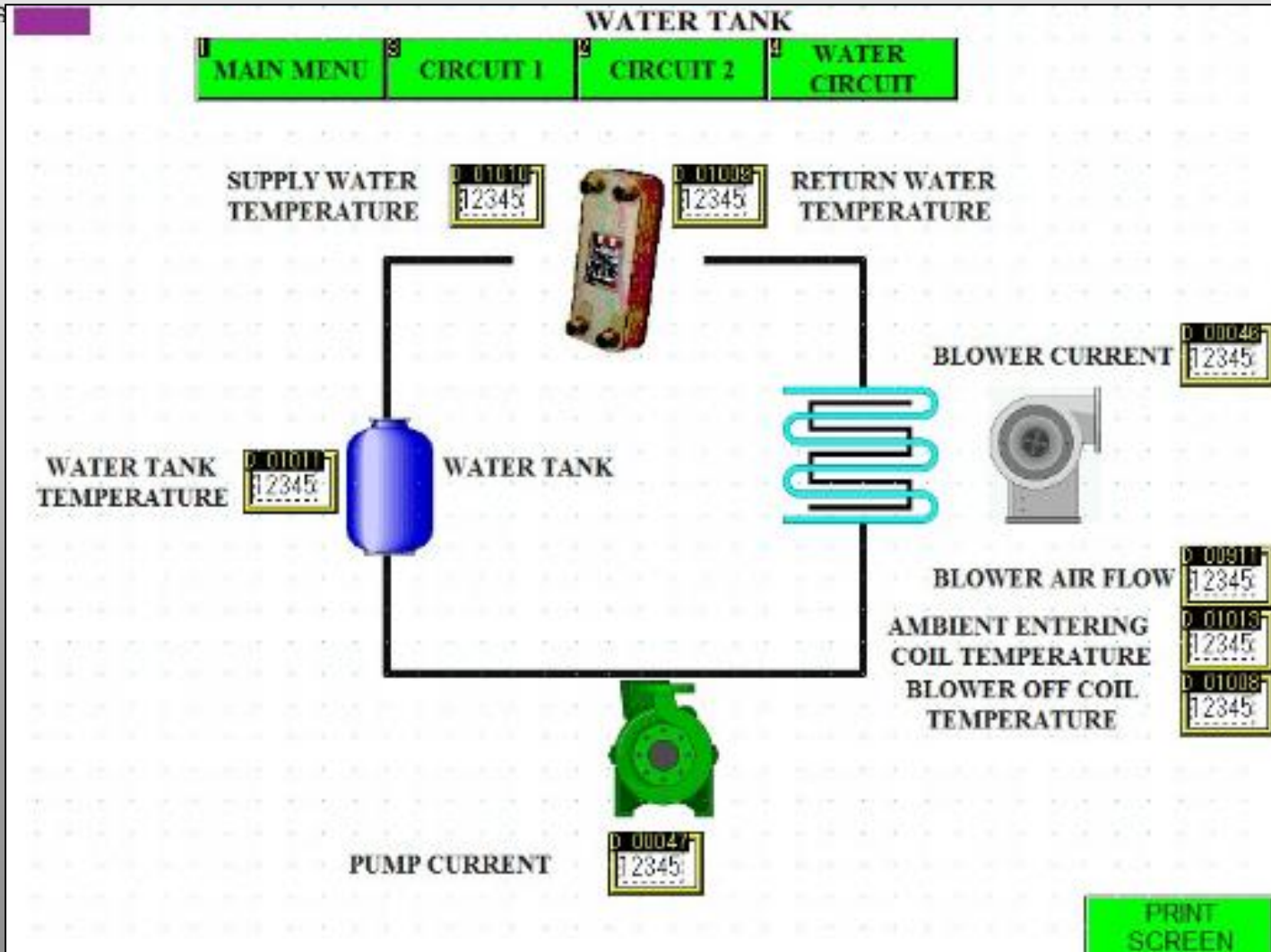
PRINT
SCREEN

Power and Air Carts – Thermal and Power

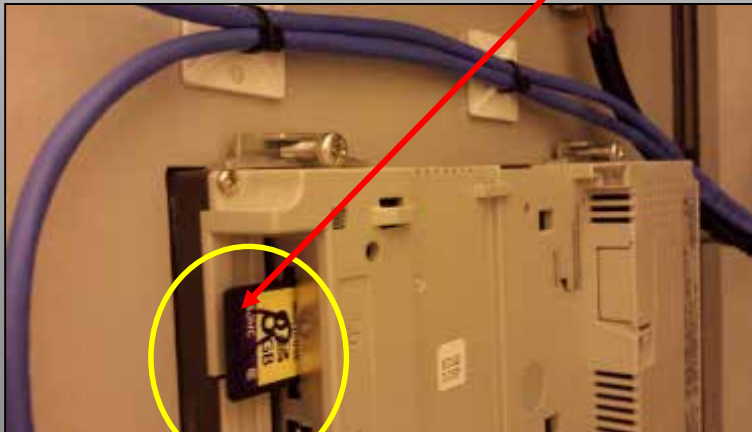
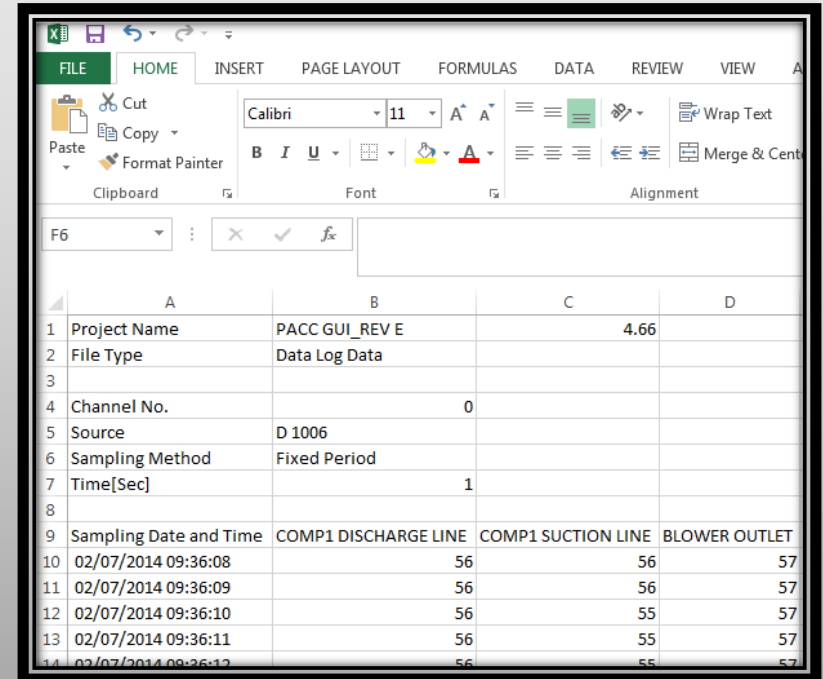


Touch Screen Controls

Power and Air Carts – Thermal and Power



Power and Air Carts – Thermal and Power

	A	B	C	D
1	Project Name	PACC GUI_REV E	4.66	
2	File Type	Data Log Data		
3				
4	Channel No.	0		
5	Source	D 1006		
6	Sampling Method	Fixed Period		
7	Time[Sec]	1		
8				
9	Sampling Date and Time	COMP1 DISCHARGE LINE	COMP1 SUCTION LINE	BLOWER OUTLET
10	02/07/2014 09:36:08	56	56	57
11	02/07/2014 09:36:09	56	56	57
12	02/07/2014 09:36:10	56	55	57
13	02/07/2014 09:36:11	56	55	57
14	02/07/2014 09:36:12	56	55	57

On the back of the Graphical User Interface (GUI) there is a Secure Digital (SD) Card reader.

The GUI can download stored data onto the SD Card.

The historical data on the SD Card is then opened as a Comma-Separated-Variable (.csv) file in Microsoft Excel.

As the data storage limit is reached old data will be over-riden to make room for new information.

Aircraft Ground Support Equipment



20,400 BTU/hr @120°F / 48.8°C

Air Flow 650 ACFM

208 V, 60 Hz, 3 phase power

Flexible 25 ft air ducts and 28
VDC and 24 VDC power cables